



Instruction Manual

Garden Sprayer Seal Kit

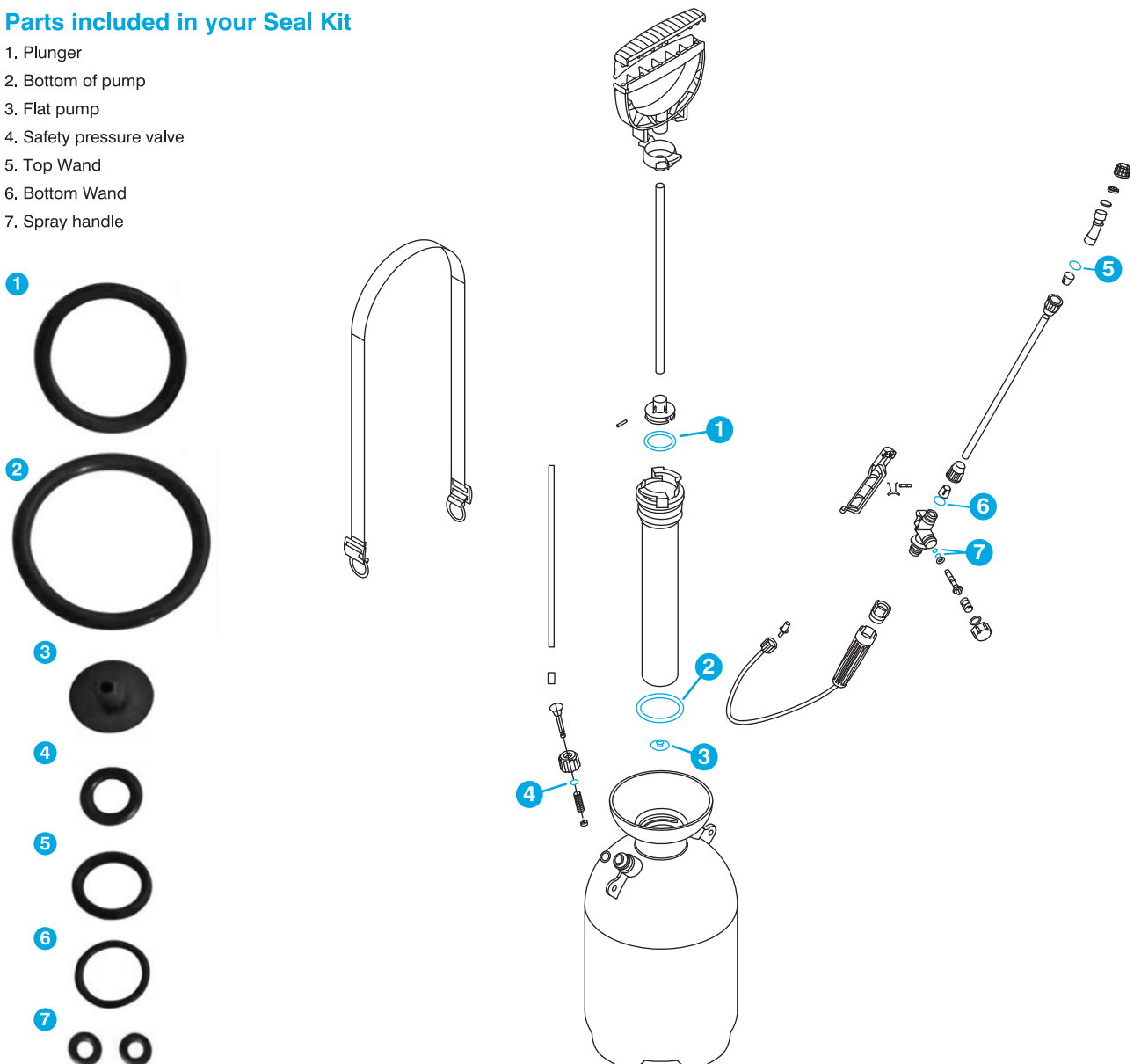
Damaged seals can mean that the sprayer won't hold pressure as they can allow pressurized air or droplets of spray mixture to escape. A large leak will render the sprayer useless. Replacing damaged seals will fix this issue and give your sprayer a new lease on life!

Things you will need

- Personal protective equipment including protective clothing, gloves, goggles and respirator
- Nylex garden sprayer seal kit
- Vegetable oil
- 2 small, flat-head screwdrivers (optional)

Parts included in your Seal Kit

1. Plunger
2. Bottom of pump
3. Flat pump
4. Safety pressure valve
5. Top Wand
6. Bottom Wand
7. Spray handle





Instruction Manual

Garden Sprayer Seal Kit

Instructions

1. Before performing maintenance on your sprayer please ensure you have thoroughly review and understand the information provided in the sprayer's instruction manual with particular attention given to descriptions of safety procedures. It is recommended to wear personal protective equipment including protective clothing, gloves, goggles and respirator while performing maintenance on the sprayer.
2. Unscrew the garden sprayer's pump and pull it out of the sprayer. Flip off the two seals on the low end of the pump assembly with your fingernail and press the two new seals (2&3) into place which should pop in easily.
3. Depress the plastic lock tabs that anchor the pump assembly's cap, and turn the cap clockwise. Depress the lock tabs gently with two flat-head screwdrivers if using your fingers doesn't work. Pull out the pump plunger, and remove the exposed, large seal that encircles the plunger, using a small, flat-head screwdriver to coax it out of place if necessary.
4. Lubricate the new, replacement seal (1) with a small amount of light vegetable oil and slide or roll it into place in the channel from which you removed the old seal. Place, if desired, a small amount of vegetable oil around the top edge of the inside wall of the shaft chamber, and spread the oil with the plunger. That oil can make the pump work more easily. Slide the plunger back into the shaft, and snap together the lock tabs of the pump assembly's cap and shaft.
5. Unscrew the wand and spray handle assembly from the end of the hose. Remove the seal at each end of the wand (5&6) and at the spray handle assembly (7) by flipping them out of the channel with your fingernail or a small, flat-head screwdriver. Slide or roll new seals into the channels. Reconnect the spray-handle assembly and wand to the end of the hose.
6. Unscrew the nozzle adjustment piece from the end of the wand and clear away all debris that is inside the nozzle.
7. Ensuring the bottle is not at all pressurised, unscrew the pressure valve to replace its seal (4)
8. At the tank end, disconnect the hose from the siphon tube in the tank by gently pulling it free. Check the hose for kinks, splits and other damage. You can repair damage near either end of the hose. Repair it by cutting off the damaged end with a utility knife and push the hose back onto the siphon tube. Trim off damage on the wand end of the hose, and reconnect the hose. If the hose is too short after trimming off damaged areas, simply replace the hose with a new one.
9. Upon completing maintenance make sure all parts are functioning properly before using the item with chemicals.