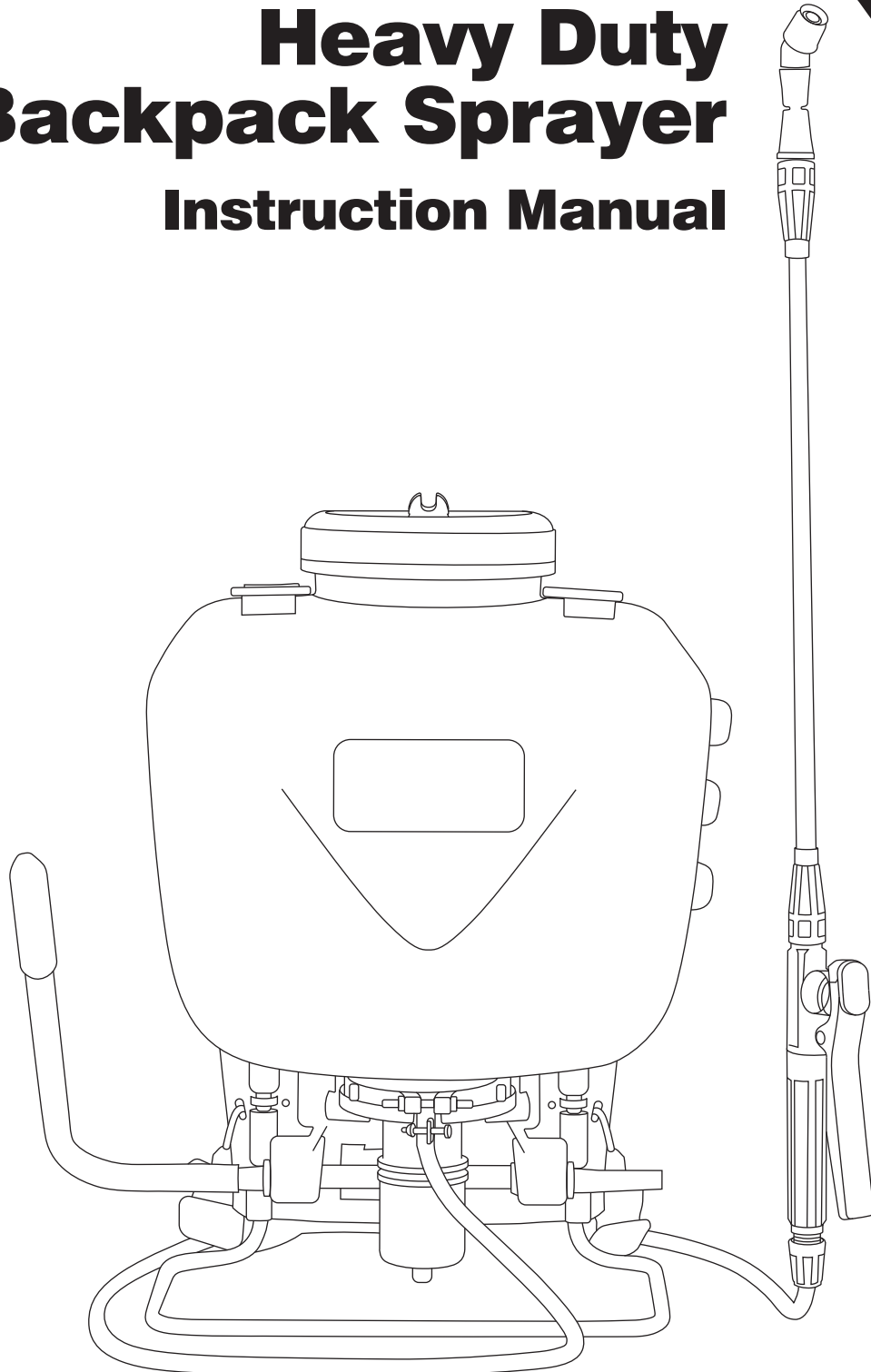


nylex

15
LITRE

Heavy Duty Backpack Sprayer Instruction Manual



WARNING! For your personal safety please carefully read the instruction manual and take note of the safety warnings.
Failure to comply with these warnings may result in serious injury.

WARNING!

- This sprayer is designed and manufactured solely for the purpose of applying consumer grade, water based chemicals. Under no circumstances may it be used for any other purposes.
- The use of heavy duty industrial strength chemicals may be detrimental to the safe operation of the sprayer.
- Refer to the chemical manufacturer's label for correct use and safe handling instructions of chemicals before filling or using the sprayer. If unsure of chemical and seal compatibility please contact the chemical manufacturer for further information.
- Prior to using the sprayer all operators must read and fully understanding the contents of this instruction manual and all safety information.
- Always wear the recommended safety clothing and equipment when handling chemical and operating the sprayer.
- Dispose of empty chemical containers and chemical residues in accordance with the instructions supplied by the chemical manufacturer.

DO'S

- Release pressure before filling/servicing
- Release pressure and clean after use
- Wear safety goggles and gloves
- Wear protective clothing and mask
- Spray water soluble chemicals
- Ensure adequate ventilation
- Wash hands and face after use
- Store away from sunlight
- Hand tighten fittings only
- Rinse inside of bottle before use
- Read and understand chemical manufacturers' safety directions

DONT'S

- Spray flammable liquids or solvents
- Eat, drink or smoke when spraying
- Direct spray on humans or animals
- Spray in windy conditions
- Spray in confined spaces
- Leave within reach of children
- Overfill the bottle
- Stand sprayer near naked flame or hot surfaces
- Tighten fittings with pliers etc.
- Allow children to use as a toy
- Modify bottle
- Leave bottle unattended, especially if containing chemicals

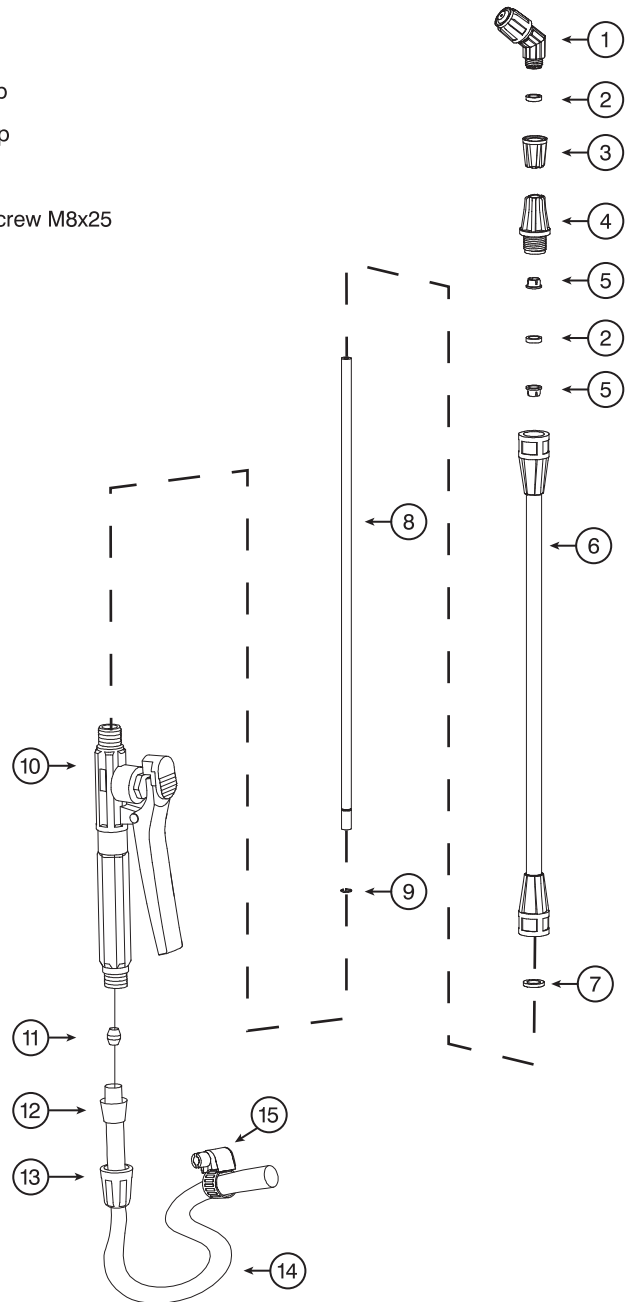
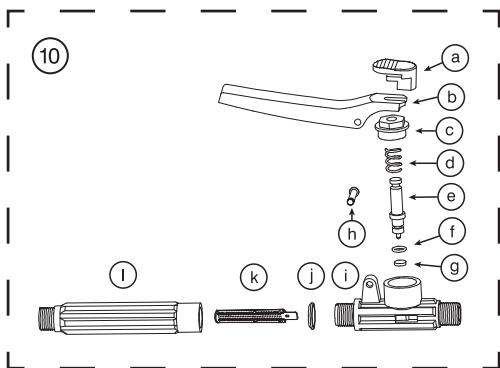
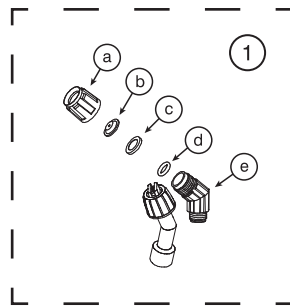
Parts

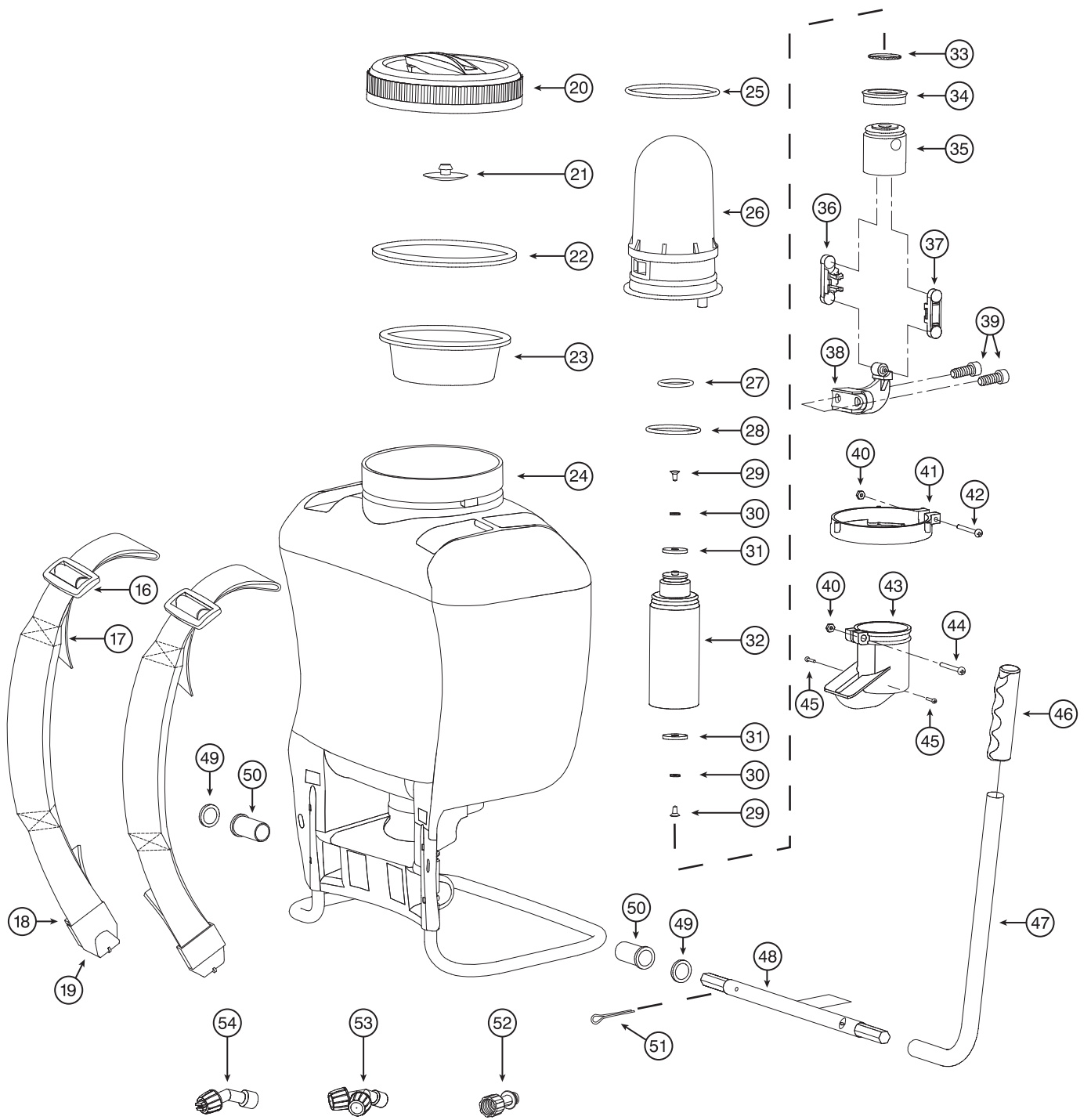
- | | | |
|----------------------------------|---------------------------------|---|
| 1. Cone Nozzle | 21. Inlet Valve | 43. Cylinder Cover |
| 1a. Spray Cap | 22. Tank Seal Ring | 44. Cross Recessed Pan Head Screw M5x25 |
| 1b. Conical Spraying Sheet | 23. Big Strainer | 45. 2x Tap Screw 3x10 |
| 1c. Split Sheet | 24. Spray Tank | 46. Rock Bar Sleeve |
| 1d. Seal Washer Sheet 16x11x2 | 25. O-Ring 95x4.5 | 47. Rock Bar |
| 1e. Bend | 26. Air Chamber Assembly | 48. Turn Bar |
| 2. Spraying Sheet | 27. O-Ring 29x3.6 | 49. 2x Flat Washer 16 |
| 3. Internal Rod Nut | 28. O-Ring 49x4 | 50. 2x Bushing |
| 4. Outside Rod Nut | 29. 2x Tap Screw 4x8 | 51. Split Pin 2.5x25 |
| 5. 2x Lock Sleeve | 30. x2 Flat Washer 4 | 52. Connector |
| 6. Outer Casing | 31. x2 Valve Sheet | 53. 30° Dual Nozzle |
| 7. Seal Washer Sheet 16.8x10x2.5 | 32. Cylinder | 54. Fan Nozzle |
| 8. Sprayer Rod | 33. Internal Compression Spring | |
| 9. Spring | 34. Leather Cup | |
| 10. Switch Assembly | 35. Piston | |

- 10a. Limit Cap
- 10b. Switch Press Plate
- 10c. Switch Nut
- 10d. Switch Spring
- 10e. Valve Plug
- 10f. Valve Plug O-Ring 9.5x1.9
- 10g. Seal Ring
- 10h. Switch Pin
- 10i. Switch Body
- 10j. 2x O-Ring 18.5x2.65
- 10k. Switch Filter Screen
- 10l. Handle

- 36. Connection Rod Circlip
- 37. Connection Rod Clamp
- 38. Rockarm
- 39. 2x Socket Hexagon Screw M8x25
- 40. 2x Hex Nut M5
- 41. Air Chamber Clamp
- 42. Cross Recessed Pan Head Screw M5x45

- 11. Flared Sheath
- 12. Plastic Tube Sleeve
- 13. Spray Rod Cap
- 14. Plastic Tube
- 15. Pipe-Clip
- 16. 2x Strap Fastener
- 17. 2x Strap
- 18. 2x Strap Buckle
- 19. 2x Strap Hood
- 20. Tank Lid





Operating Instructions

IMPORTANT!

- Before using any chemicals including herbicides, pesticides, insecticides and weed killers it is advisable to familiarise yourself with the sprayer operation by filling it with water and testing the various spray patterns.
- Thick mixtures can clog the spray nozzle. Solutions of this kind should be strained and diluted to prevent blockages.
- Always wear the recommended safety clothing and equipment when handling chemical and operating the sprayer.
- Avoid spraying on windy days and around pets or children.

Steps

- * Refer to diagram for assembly guidance.
- * Left or right-handed operation can be achieved by changing the pump mechanism from position LEFT to position RIGHT.

1. Stand the sprayer on a level surface, do not fill the container above the maximum mark
2. When filling from the central water supply, do not immerse the end of the hose in the solution. Sudden low pressure in the system may cause the solution to be sucked back into the water supply.
3. Before filling the container with spray solution, carry out a test run with fresh water, and check all parts of the sprayer for leaks.
4. After filling, fit the filler cap, and tighten it down firmly. Make sure that the other tank cap is also tight to prevent air escaping during use.
5. Hang a tag to the product to note what chemical is being used.
6. Firmly screw Lance Assembly to the Handle.
7. Adjust straps for comfort.
8. Pump handle and start spraying by pressing the on/off trigger on handle. The handle assembly is equipped with a lock for continuous spraying. Press trigger and slide it forward until locked. To unlock, slide the trigger back and release it.
9. Pump handle periodically to maintain pressure for ongoing spray flow.
10. Adjust the nozzle for required spray pattern.

Application

- Work only in the open or in well-ventilated locations, e.g. open greenhouses.
- Never blow through nozzles or other components by mouth.
- Avoid contact with plant control chemicals, immediately change clothing contaminated with plant control chemicals.
- Do not spray in windy conditions.
- Too high or too low pressure or unfavorable weather conditions can result in the wrong solution concentration. Overdosing may damage plants and the environment. Underdosing may result in unsuccessful plant treatment.

To reduce the risk of damage to the environment and plants, do not operate the sprayer:

- When pressure is too high or too low.
- In windy conditions.
- In direct sunlight.

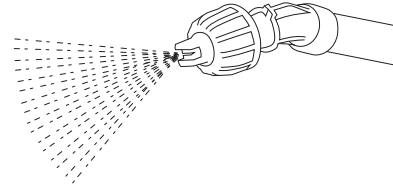
To reduce the risk of accidents and damage to the sprayer, never operate the sprayer with:

- Flammable liquids.
- Viscous or sticky liquids.
- Caustic or corrosive chemicals.
- Liquids hotter than 50°C.
- Avoid using the product in freezing weather since the solution may freeze.

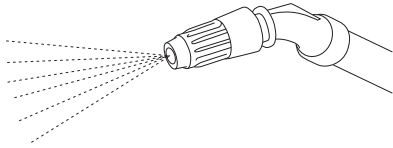
Note: The lock-on feature is convenient when spraying for an extended period of time or when covering a large area.

- To lock-on, squeeze the trigger and slide the locking tab backward.
- To release the lock-on, squeeze the trigger and slide the locking tab forward.
- Use the backpack sprayer with either the flat fan nozzle (A) or cone spray nozzle(B). To start the flow of liquid of the spray wand, squeeze the trigger.

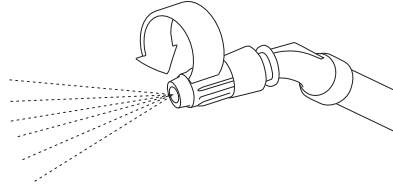
(A) Flat Fan Nozzle



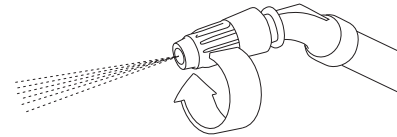
(B) Cone Spray Nozzle



The cone spray nozzle can be adjusted from a stream to a scatter spray.

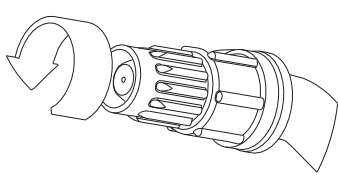


For a scatter spray, turn the nozzle clockwise.

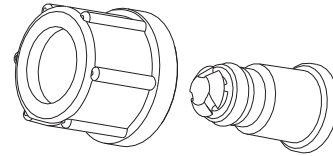
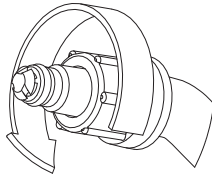


For a stream spray, turn the nozzle counterclockwise.

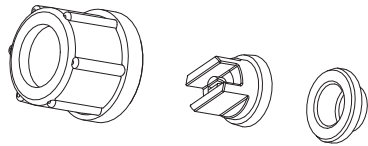
Strip Spray: Your sprayer comes with an additional strip spray nozzle attachment to aid in controlled spraying.



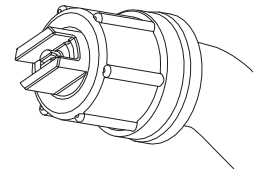
To fit strip spray, remove the current nozzle from the attachment cap.



Remove nozzle from cap.



Re-assemble the two green halves of nozzle and store safely. Place strip spray nozzle into rear of attachment cap along with filter.



Replace assembly onto end of nozzle elbow.

After Use

- Release pressure from the sprayer unit before refilling or replacing parts. This is done by pressing the on/off trigger and letting out as much air or liquid as possible through the lance and nozzle assembly.
- After you have ensured the sprayer contains no pressure, remove the tank cap and empty any liquid left inside the container.
- **Note:** Even though the bottle may have no liquid left inside, the actual pump chamber may still contain residual fluid in it.
- To empty the residual fluid, press and lock the on/off trigger for continuous spraying, then pump handle a few times and ensure that all liquid and air is fully expelled.
- Refill the bottle with approximately 2 litres of clean tap water, then with the on/off trigger pressed and locked for continuous spraying, pump handle and start expelling all the water until empty.
- Make sure that the sprayer is not pressurised and contains no liquid. Do not store in direct sunlight and store out of reach of children. Refer to detailed safety instructions in this manual.

Maintenance Advice

- Over a period of time chemicals can leave a build up of residue which normal cleaning will not remove. This build up can collect around the seals and inside the hose and pump. If left, this build up will eventually prevent the sprayer from working.
- To overcome this problem we recommend that the sprayer bottle be half filled with hot (not boiling) water from your domestic hot water supply. By pressing the sprayer on/off button and start expelling all the water until empty.
- The hot water should dissolve the built up residue and the sprayer will continue to operate normally.
- **Important:** For safety, ensure you wear protective clothing, goggles and gloves during this operation.
- **Important:** If for some reason your sprayer needs to be returned for warranty purposes, **PLEASE** wash it out thoroughly to protect our service technicians from exposure to unknown substances.

Troubleshooting

Symptom	Remedy
<ul style="list-style-type: none">▪ Pump is working but spray isn't being released.	<ul style="list-style-type: none">▪ The hose and/or filter may have become blocked. Follow the maintenance advice to remove any blockages and built up residue.

Warranty

AMES Australasia Pty Ltd (AMES) guarantees that this product will be free from defects in workmanship and materials for 2 years from the date of purchase. If such a defect becomes evident during that period, AMES will, at its option, either repair, replace or refund the product. In the event of such a defect, the product should be returned to the place of purchase (together with proof of purchase and the original packaging) at the address below. Any handling and transportation costs (and other expenses incurred in claiming under this guarantee) are not covered by this guarantee and will not be borne by AMES. The obligation of AMES under this guarantee is limited to the circumstances set out above and is subject to; the customer being able to evidence the acquisition of the product, the purchase price paid for the product and the relevant defect in materials or workmanship; the product not having been altered, tampered with or otherwise dealt with by any person in a manner other than as intended in respect of the relevant product; and the product not having been used or applied in a manner that is contrary to customary usage or application for the relevant product or contrary to any stated instructions or specifications of AMES. In addition to other rights and remedies that may be available under law, our goods come with guarantees that cannot be excluded under the Australian Consumer Law (for consumers in Australia) and the Consumer Guarantees Act (for consumers in NZ). If you are a consumer in Australia, you are entitled to a replacement or refund for a major failure and compensation for any other reasonably foreseeable loss or damage. You are also entitled to have the goods repaired or replaced if the goods fail to be of acceptable quality and the failure does not amount to a major failure. If you are a consumer in New Zealand, we will comply with our obligations to you under the Consumer Guarantees Act. Call: (Australia) 1300 381 559 E-mail: nylex@amesau.com Address: Ames Australasia Pty Ltd, 1/660 Doncaster Road, Doncaster, Victoria, Australia, 3108. Website: www.nylex.com.au

