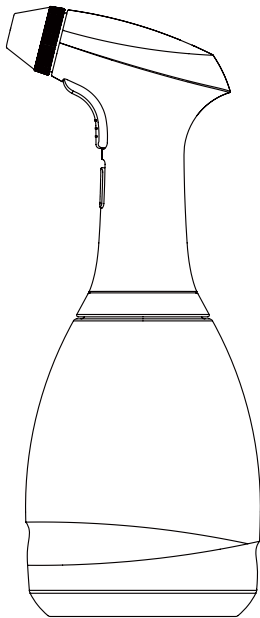


1.2
LITRE

nylex

**Rechargeable
Battery Sprayer**



WARNING! For your personal safety please carefully read the instruction manual and take note of the safety warnings.

Failure to comply with these warnings may result in serious injury.

INSTRUCTION MANUAL

WARNING!

- This sprayer is designed and manufactured solely for the purpose of applying consumer grade, water based chemicals. Under no circumstances may it be used for any other purposes.
- The use of heavy duty industrial strength chemicals will damage the sprayer. The sprayer is fitted with Nitrile Rubber Seals, please contact the chemical manufacturer for clarity on chemical compatibility with the sprayer and its seals.
- Refer to the chemical manufacturer's label for correct use and safe handling instructions of chemicals before filling or using the sprayer.
- Always wear the recommended safety clothing and equipment when handling chemicals and operating the sprayer.
- Dispose of empty chemical containers and chemical residues in accordance with the instructions supplied by the chemical manufacturer.
- Dispose of the sprayer and lithium ion battery according to your local waste management guidelines – do not simply throw it in the rubbish bin.
- Rinse the inside of the tank with cold water before use.
- Before using any chemicals including herbicides, pesticides, insecticides and weed killers it is advisable to familiarise yourself with the sprayer operation by filling it with water and testing the various spray patterns.
- Thick mixtures can clog the spray nozzle. Solutions of this kind should be strained and diluted to prevent blockages.
- Wash the container, all attachments and your hands thoroughly after each use.

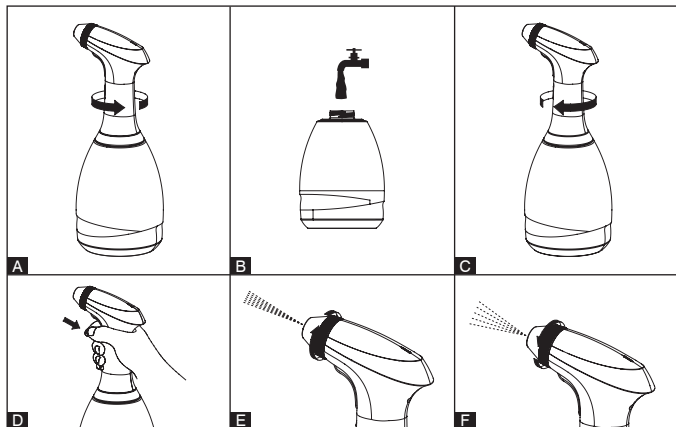
✓ DO'S

- Thoroughly clean after use
- Wear safety goggles and gloves
- Wear protective clothing and mask
- Spray water soluble chemicals
- Ensure adequate ventilation
- Wash hands and face after use
- Store away from sunlight in a ventilated space, out of reach from children
- Hand tighten fittings only
- Rinse inside of bottle before use
- Read and understand chemical manufacturers' safety directions

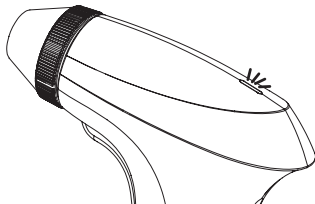
✗ DON'TS

- Spray flammable liquids or solvents
- Eat, drink or smoke when spraying
- Direct spray on humans or animals
- Spray in windy conditions
- Leave within reach of children
- Overfill the bottle
- Stand sprayer near naked flame or hot surfaces
- Tighten fittings with pliers etc.
- Allow children to use or person's who have not read the instruction manual
- Modify bottle
- Leave bottle unattended, especially if containing chemicals

Operating Instructions:



1. Unscrew the sprayer head according to Figure A;
2. Fill the bottle with either water or your solution according to Figure B;
3. Assemble the head into the bottle according to Figure C;
4. Press the power switch according to Figure D. Holding down the switch will activate the spray, quickly double clicking the switch will activate the spray lock for continuous spray function which helps to prevent fatigue.
5. Rotate the spray nozzle counterclockwise according to Figure E to spray using the Jet style spray.
6. Rotate the spray nozzle clockwise according to Figure F to spray using the Mist style spray.



Power Light Indicator

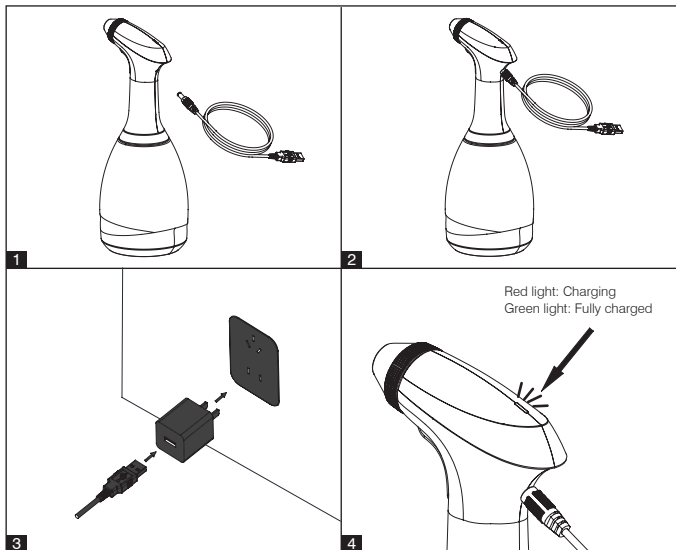
Green Light: Sufficient Power

Red Light: Low Battery

Flashing Red Light: Battery about to run out

How To Use Charger:

- **Warning!** When using the battery charger ensure it is a dry environment and do not leave the charger where it may get wet.
- **Warning!** Children should be supervised not to play with battery charger.
- **Warning!** The battery charger is only intended to be used with this product.
- **Warning!** The supply cord cannot be replaced. If the cord is damaged the battery charger should be scrapped.
- **Warning!** If you do not use this product for a long time, in order to avoid the damage of the product caused by the exhaustion of lithium battery power and affect the normal life of the battery, it is recommended to charge it every 3 months.
- **Warning!** If the charging time is longer than the limited time and the charging indicator is still unresponsive, unplug the charger immediately. And contact the manufacturer or distributor.



1. Plug charger into port (Figure 1 & 2) and then into the power source (Figure 3).
2. When the indicator light is red it is charging; after approx 120 minutes, the light will change to green when it is fully charged (Figure 4).

Maintenance Advice

- Over a period of time chemicals can leave a build up of residue which normal cleaning will not remove. This build up can collect around the seals and inside the hose and pump. If left, this build up will eventually prevent the sprayer from working.
- To overcome this problem we recommend that the sprayer bottle be half filled with hot (not boiling) water from your domestic hot water supply. By pressing the sprayer on/off button and start expelling all the water until empty.
- The hot water should dissolve the built up residue and the sprayer will continue to operate normally.
- **Important:** For safety, ensure you wear protective clothing, goggles and gloves during this operation.
- **Important:** If for some reason your sprayer needs to be returned for warranty purposes, **PLEASE** wash it out thoroughly to protect our service technicians from exposure to unknown substances.

Troubleshooting

Symptom	Remedy
<ul style="list-style-type: none">• Pump is working but spray isn't being released.	<ul style="list-style-type: none">• The hose and/or filter may have become blocked. Follow the maintenance advice to remove any blockages and built up residue.
<ul style="list-style-type: none">• Battery charger is not charging.	<ul style="list-style-type: none">• Check all terminals are fitted correctly and the power socket is working.

Warranty

AMES Australasia Pty Ltd (AMES) guarantees that this product will be free from defects in workmanship and materials for 2 years from the date of purchase. If such a defect becomes evident during that period, AMES will, at its option, either repair, replace or refund the product. In the event of such a defect, the product should be returned to the place of purchase (together with proof of purchase and the original packaging) at the address below. Any handling and transportation costs (and other expenses incurred in claiming under this guarantee) are not covered by this guarantee and will not be borne by AMES. The obligation of AMES under this guarantee is limited to the circumstances set out above and is subject to; the customer being able to evidence the acquisition of the product, the purchase price paid for the product and the relevant defect in materials or workmanship; the product not having been altered, tampered with or otherwise dealt with by any person in a manner other than as intended in respect of the relevant product; and the product not having been used or applied in a manner that is contrary to customary usage or application for the relevant product or contrary to any stated instructions or specifications of AMES. In addition to other rights and remedies that may be available under law, our goods come with guarantees that cannot be excluded under the Australian Consumer Law (for consumers in Australia) and the Consumer Guarantees Act (for consumers in NZ). If you are a consumer in Australia, you are entitled to a replacement or refund for a major failure and compensation for any other reasonably foreseeable loss or damage. You are also entitled to have the goods repaired or replaced if the goods fail to be of acceptable quality and the failure does not amount to a major failure. If you are a consumer in New Zealand, we will comply with our obligations to you under the Consumer Guarantees Act. Call: (Australia) 1300 381 559 E-mail: nylex@amesau.com Address: Ames Australasia Pty Ltd, 1/660 Doncaster Road, Doncaster, Victoria, Australia, 3108.
Website: www.nylex.com.au